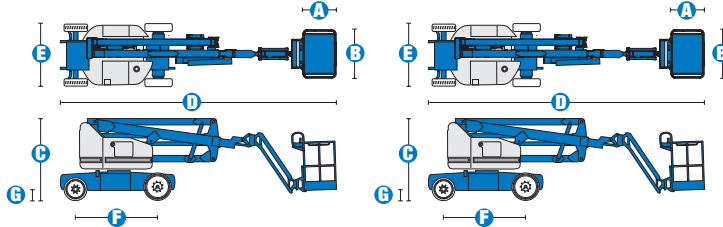


# Specifications



MODELS	Z™-40/23N		Z™-40/23N RJ	
MEASUREMENTS	Metric	US	Metric	US
Working height maximum*	14.32 m	46 ft 5 in	14.32 m	46 ft 5 in
Platform height maximum	12.32 m	40 ft 5 in	12.32 m	40 ft 5 in
Horizontal reach maximum	6.91 m	22 ft 8 in	6.91 m	22 ft 8 in
Up and over clearance maximum	6.73 m	22 ft 1 in	6.73 m	22 ft 1 in
A Platform length	76 cm	2 ft 6 in	76 cm	2 ft 6 in
B Platform width	1.42m	4 ft 8 in	1.17 m	3 ft 10 in
C Height - stowed	1.98 m	6 ft 6 in	1.98 m	6 ft 6 in
D Length - stowed	6.53 m	21 ft 5 in	6.53 m	21 ft 5 in
E Width	1.50 m	4 ft 11 in	1.50 m	4 ft 11 in
F Wheelbase	1.96 m	6 ft 5 in	1.96 m	6 ft 5 in
G Ground clearance - centre	24.10 cm	9.50 in	24.10 cm	9.50 in

PRODUCTIVITY	Z™-40/23N		Z™-40/23N RJ	
Lift capacity	227 kg	500 lbs	227 kg	500 lbs
Platform rotation	180°	180°	180°	180°
Vertical jib rotation	128° (+68°/-60°)	128°	128° (+68°/-60°)	128°
Horizontal jib rotation	—	—	180° (2x90°)	180°
Turntable rotation	355° non-continuous		355° non-continuous	
Turntable tailswing	13 cm	5 in	13 cm	5 in
Drive speed - stowed	6 km/h	3.8 mph	6 km/h	3.8 mph
Drive speed - raised**	30 cm/s	1 ft/s	30 cm/s	1 ft/s
Gradeability - stowed***	30%	30%	30%	30%
Turning radius - inside	87 cm	2 ft 11 in	87 cm	2 ft 11 in
Turning radius - outside	3.20 m	10 ft 6 in	3.20 m	10 ft 6 in
Controls	24 V DC proportional		24 V DC proportional	
Tyres - front	56x18x45 cm	22x7x17.75 in	56x18x45 cm	22x7x17.75 in
Tyres - rear	64 x 18 cm	25.6 x 7 in	64 x 18 cm	25.6 x 7 in

POWER	Z™-40/23N		Z™-40/23N RJ	
Power source	48 V DC (eight 6 V batteries) 350 Ah capacity		48 V DC (eight 6 V batteries) 350 Ah capacity	
Drive system	29 V 3 phase AC		29 V 3 phase AC	
Auxiliary power unit	24 V DC		24 V DC	
Hydraulic tank capacity	30.3 L	8 gal	30.3 L	8 gal

SOUND & VIBRATION LEVELS	Z™-40/23N		Z™-40/23N RJ	
Sound pressure level (ground workstation)	<70 dBA	<70 dBA	<70 dBA	<70 dBA
Sound pressure level (platform workstation)	<70 dBA	<70 dBA	<70 dBA	<70 dBA
Vibration	<2.5 m/s <sup>2</sup>	<8 ft 2 in/s <sup>2</sup>	<2.5 m/s <sup>2</sup>	<8 ft 2 in/s <sup>2</sup>

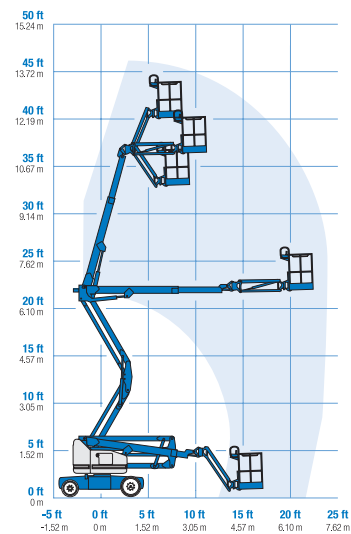
WEIGHT***	Z™-40/23N		Z™-40/23N RJ	
	6,908 kg	15,230 lbs	6,940 kg	15,300 lbs

### STANDARDS COMPLIANCE

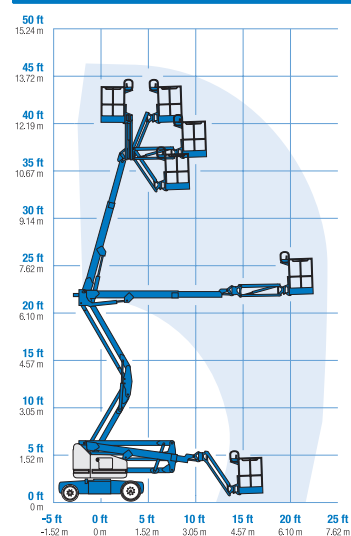
- EU Machinery Directive 2006/42/EC
- EU Standard EN280:2001, A2:2009
- EMC Directive 2004/108/EC EN 61000-6-2, EN 61000-6-4
- EU Low Voltage Directive 206/95/EC EN 60204-1:2006

\* The metric equivalent of working height adds 2 m to platform height. U.S. adds 6 ft to platform height.  
 \*\* In lift mode \*(platform raised), the machine is designed to operated on firm, level surfaces only.  
 \*\*\* Gradeability applies to driving on slopes. See operator's manual for details regarding slope ratings.  
 \*\*\*\* Weight will vary depending on options and/or country standards.

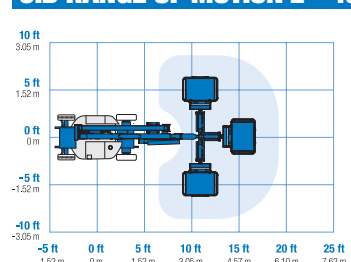
### RANGE OF MOTION Z™-40/23N



### RANGE OF MOTION Z™-40/23N RJ



### JIB RANGE OF MOTION Z™-40/23N RJ



## Features

### EASILY CONFIGURED TO MEET YOUR NEEDS

#### PLATFORM OPTIONS

- Steel 1.42 m (4 ft 8 in) (Z40N only)
- Steel 1.17 m (3 ft 10 in) (Standard on Z40N RJ, option on Z40N)

#### JIB OPTIONS

- 1.22 m (4 ft) jib boom
- 1.22 m (4 ft) horizontal rotating jib boom

#### POWER

- 48 V DC (eight 6 V 350 Ah batteries)

#### DRIVE

- 2X4

#### BATTERY CHARGING

- 25 Amp 48 V DC onboard charger

#### TYRE

- Solid rubber non-marking



### STANDARD FEATURES

#### MEASUREMENTS

##### Z™-40/23N & Z™-40/23N RJ

- 14.32 m (46 ft 5 in) working height
- 6.91 m (22 ft 8 in) horizontal reach
- 6.73 m (22 ft 1 in) up and overclearance
- Up to 227 kg (500 lb) lift capacity

#### PRODUCTIVITY

- 1.50 m (4 ft 11 in) width
- 87 cm (2 ft 11 in) inside turning radius
- 1.22 m (4 ft) jib boom with 128° working range
- Self-levelling platform
- Hydraulic platform rotation
- Fully proportional controls
- Thumb rocker steer
- Drive enable
- AC power cord to platform
- Horn
- Hour meter
- Tilt alarm
- Descent alarm
- Alarm package (flashing beacon & travel alarm)
- Hydraulic filter condition monitor
- 355° non-continuous turntable rotation
- Variable speed high efficiency hydraulic power unit
- AC electric drive system
- Traction control
- On-board easy to understand diagnostics
- Certified load sensor

#### POWER

- 48 V DC deep cycle battery pack
- 24 V DC auxiliary power
- Universal 30A battery smart charger
- Battery charge indicator
- Low battery voltage interrupt

### OPTIONS & ACCESSORIES

#### PRODUCTIVITY

- Platform swing gate
- Half-mesh platform inserts with swing gate
- Air line to platform
- Power to platform (incl. plug, socket and ground fault interrupt leakage on request)
- Light package: 2 chassis mounted drive lights, 2 platform mounted work lights
- Hostile environment kit: cylinder bellows, boom wiper seals, platform control box cover
- Low temperature cut-out module
- Fire resistant hydraulic oil
- Biodegradable hydraulic oil
- Tilt cut-out option
- Tool tray
- Fluorescent tube caddy\*
- Platform work lights
- Lockable platform control box cover

\*Available aftermarket only