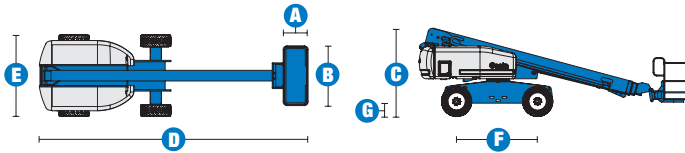


Specifications



MODELS S™-60HC

MEASUREMENTS	Metric	US
Working height maximum*	19.79 m	64 ft 4 in
Platform height maximum	17.79 m	58 ft 4 in
Horizontal reach maximum in 340 kg (750 lb) maximum outreach zone	15.50 m	50 ft 10 in
Horizontal reach maximum in 567 kg (1,250 lb) maximum capacity zone	11.87 m	38 ft 11 in
Below ground reach	1.70 m	5 ft 7 in
A Platform length - 8 ft model	91 cm	3 ft
Platform length - 6 ft model	76 cm	2 ft 6 in
B Platform width - 8 ft model	2.44 m	8 ft
Platform width - 6 ft model	1.83 m	6 ft
C Height - stowed	2.72 m	8 ft 11 in
D Length - stowed	8.51 m	27 ft 11 in
E Width	2.49 m	8 ft 2 in
F Wheelbase	2.50 m	8 ft 2.5 in
G Ground clearance - centre	37 cm	1 ft 2.5 in

PRODUCTIVITY

Lift capacity - maximum outreach zone	340 kg	750 lbs
Lift capacity - maximum capacity zone	567 kg	1,250 lbs
Platform rotation	160°	160°
Turntable rotation	360° continuous	
Turntable tailswing	1.22 m	4 ft
Drive speed - 2WD stowed	6.4 km/h	4.0 mph
Drive speed - 4WD stowed	4.8 km/h	3.0 mph
Drive speed - raised or extended	1.1 km/h	0.68 mph
Gradeability - 2WD stowed**	30%	30%
Gradeability - 4WD stowed**	45%	45%
Turning radius - inside	2.36 m	7 ft 9 in
Turning radius - outside	5.54 m	18 ft 2 in
Controls	12 V DC proportional	
Tyres - RT Lug	355/55D 625	

POWER

Power source	Ford DSG-423 4 cylinder petrol/LPG 75 hp (56 kW) Deutz D-2011 LO3i cylinder diesel 48 hp (36 kW) Perkins 404D-22 4 cylinder diesel 51 hp (38 kW)	
Auxiliary power unit	12 V DC	
Hydraulic tank capacity	170 L	45 gal
Fuel tank capacity	132 L	35 gal

SOUND & VIBRATION LEVELS

Sound pressure level (ground workstation)	83 dBA	83 dBA
Sound pressure level (platform workstation)	79 dBA	79 dBA
Vibration	<2.5 m/s ²	<8 ft 2 in/s ²

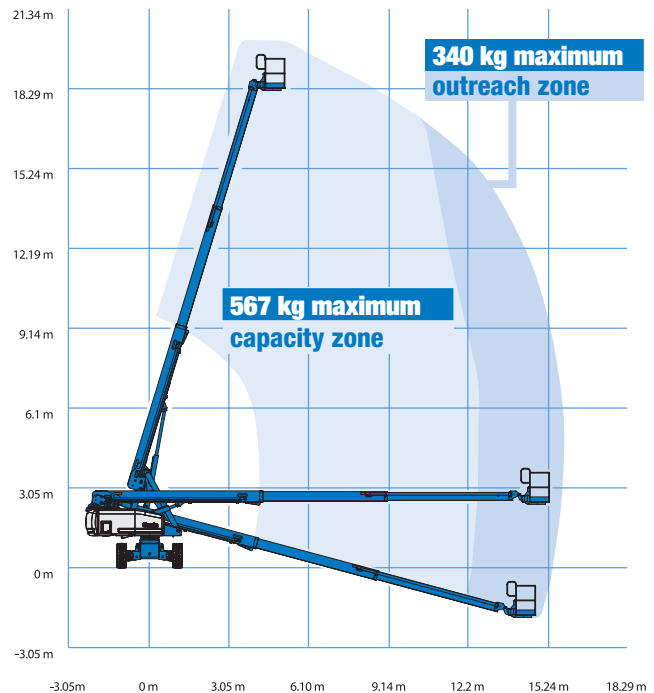
WEIGHT***

2WD	9,996 kg	22,038 lbs
4WD	10,073 kg	22,208 lbs
CE Foam Filled tyres	add 343 kg	add 756 lbs

STANDARDS COMPLIANCE CE EN280, PB-10-611-03

* The metric equivalent of working height adds 2 m to platform height. U.S. adds 6 ft to platform height.
 ** Gradeability applies to driving on slopes, see operator's manual for details regarding slope ratings.
 *** Weight will vary depending on options and/or country standards.

RANGE OF MOTION S™-60HC



Features

EASILY CONFIGURED TO MEET YOUR NEEDS

PLATFORM OPTIONS

- Steel 2.44 m (8 ft) standard
- Steel 1.83 m (6 ft)
- Steel 2.44 m (8 ft) tri-entry

POWER

- Ford petrol/LPG 75 hp (56 kW)
- Deutz diesel 48 hp (36 kW)
- Perkins diesel 51 hp (38 kW)
- Deutz turbo diesel 74 hp (55 kW) - optional

DRIVE OPTIONS

- 2x4
- 4x4

AXLE OPTIONS

- Active oscillation
- Non-oscillating

TYRE OPTIONS

- Rough terrain air-filled (standard)
- Rough terrain foam-filled
- Rough terrain, non marking, foam filled



STANDARD FEATURES

MEASUREMENTS

- 19.79 m (64 ft 4 in) working height
- 15.5 m (50 ft 10 in) maximum horizontal reach with 340 kg (750 lb) load
- 11.87 m (38 ft 11 in) horizontal reach with 567 kg (1,250 lb) load
- 340 kg (750 lb) platform load in maximum outreach zone
- 567 kg (1,250 lb) platform load in maximum capacity zone

PRODUCTIVITY

- Dual capacity with automatic envelope control
- Electronic platform load and position monitoring
- 3 person capacity deck
- Self-levelling platform
- Hydraulic platform rotation
- Fully proportional Hall effect joystick controls
- Thumb rocker steer
- Drive enable
- AC power to platform
- Tilt alarm
- Descent alarm
- Alarm package (flashing beacon and travel alarm)
- Hour meter
- Horn
- 360° continuous turntable rotation
- Positive traction drive
- Two speed wheel motors
- Certified load sensor

POWER

- 12 V DC auxiliary power
- Anti-restart engine protection
- Auto engine fault shutdown
- Diesel intake air heater (Deutz)

OPTIONS & ACCESSORIES

PRODUCTIVITY

- Platform swing gate
- Half-mesh platform inserts with swing gate
- Platform top auxiliary rail
- Lockable platform control box cover
- Weld leads to platform
- Air line to platform
- Power to platform (incl. plug, socket/ground fault interrupt earth leakage on request)
- Hydraulic oil cooler
- Biodegradable hydraulic oil
- Basic hostile environment kit
- Deluxe hostile environment kit
- Aircraft protection package (6 ft platform only)
- Tool tray
- Fluorescent tube caddy**
- Panel cradle package* (foam filled)
- Platform work lights**
- Light package (2 chassis mounted drive lights, 2 platform mounted work lights)
- Second battery
- Tow package

POWER

- Engine gauge package
- AC generator packages
- Diesel catalytic scrubber muffler
- Diesel intake air pre-cleaner
- Engine heater
- Soot filter
- Raffinery kit (spark arrestor + electric or mechanical Chalwyn valve)

* Available on tri-entry basket model only